



GOROUT TEAMS UP WITH KORE TO TRANSFORM COACH-TO-PLAYER COMMUNICATION



OVERVIEW

GoRout, a leading provider of coach-to-player communication systems for football and baseball/softball teams, needed a way to deliver instant, reliable, and secure communication on the field – without relying on unreliable Wi-Fi or outdated methods like hand signals and paper play cards. To make this vision a reality, GoRout partnered with KORE, leveraging its global IoT connectivity platform to power its innovative devices.

THE CHALLENGE

In practice and in games, coaches must quickly and clearly communicate plays to athletes – often in high-pressure, high-traffic environments like packed stadiums or busy practice fields. GoRout faced several critical challenges:

- **Unreliable connectivity:** Traditional Wi-Fi or basic LTE solutions couldn't guarantee delivery during moments of peak network usage, especially in stadiums filled with fans.

- **Security risks:** With growing concerns around sign stealing in sports, secure and encrypted communication was a must.
- **Efficiency and clarity:** Coaches needed a system that could deliver detailed, position-specific instructions instantly, eliminating confusion and delays.

THE SOLUTION

GoRout implemented KORE Super SIM™, a multi-network, global connectivity solution built for mission-critical applications. This technology powers the GoRout Air™ Network, which gives each GoRout device seamless access to Tier 1 cellular networks - including AT&T, Verizon and T-Mobile - and ensures each device automatically connects to the strongest available signal.

Whether it's the GoRout Scout (used in practices to send full play cards to player devices) or the GoRout GridIron (used during in-game situations to send secure play names to wearable wrist displays), every GoRout device is backed by KORE's secure, reliable, and high-priority IoT connectivity.

KEY BENEFITS DELIVERED BY KORE:

- Failover Protection: KORE constantly evaluates all available networks and switches to the best signal automatically.
- Tier 1 Network Priority: GoRout signals are prioritized over general traffic, meaning messages cut through stadium congestion.
- Nationwide Reach: Coaches and players stay connected - whether on college campuses, local high school fields, or remote travel ball tournaments.
- Security and Privacy: Encrypted communication to prevent eavesdropping or sign stealing.

THE RESULTS

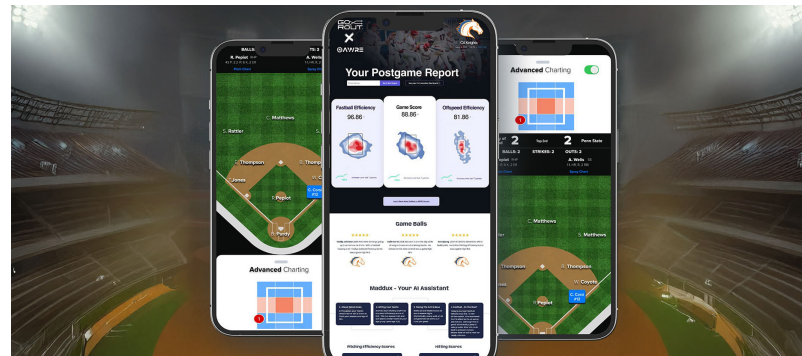
Since integrating KORE technology, GoRout has scaled its operations rapidly:

- Nearly 3,000 teams use GoRout across youth, high school, and collegiate levels.
- 10 million+ play and pitch calls have been sent through the GoRout system.
- 10,000+ GoRout devices are worn daily by athletes in football and baseball/softball.
- Programs from 8U travel teams to Division I college teams rely on GoRout for efficient, secure communication.

CUSTOMER TESTIMONIALS

"We reduced errors in our communication and sped up the game in our first year with the system. The technology allows us to be specific and creative... The customer service is outstanding."

Jenny Allard, University of Pittsburgh Softball



"GoRout has been a huge addition to our program! We no longer worry about missing signs, and don't need to spend any time teaching them!"

Kevin Leighton, Fordham University Baseball

"GoRout, with both their devices and excellent customer service, has made me a more efficient and effective coach. The devices are easy to use, functional, and are evolving to match their devotion to giving our programs the best of what technology can offer right now. I would recommend GoRout to any coach at any level who is looking to make a switch"

Joshua Trevino, Texas State Softball

LOOKING AHEAD

Founded in Rochester in 2014, GoRout has made remarkable strides in transforming coach-to-player communication. In October 2024, the company went live with in-game technology for Liberty League football teams, with NCAA approval for broader adoption currently pending. Now, in 2025, GoRout is expanding globally - entering Europe and the Asia-Pacific region, with plans to launch in Australia by year's end.

"At GoRout, we see IoT as the engine behind the future of sports. Whether it's practice efficiency, in-game communication, or eliminating sign stealing, our technology – backed by KORE's IoT connectivity – allows teams to focus purely on performance. This is the next era of how games are coached and played."

Mike Rolih, Founder & CEO

The GoRout and KORE partnership is a model for how reliable IoT connectivity can unlock real-time, on-field decision-making in sports. From practice to playoffs, GoRout's success shows what happens when technology, reliability, and innovation come together – with KORE Wireless at the core.



ABOUT KORE

KORE is a pioneer, leader, and trusted advisor delivering mission critical IoT solutions and services. We empower organisations of all sizes to improve operational and business results by simplifying the complexity of IoT. Our deep IoT knowledge and experience, global reach, purpose-built solutions, and deployment agility accelerate and materially impact our customers' business outcomes.

For more information, visit korewireless.com



ABOUT GOROUT

GoRout, the leader in coachto player(s) communication technology, was built to help coaches securely communicate play calls and adjustments to players instantly, onfield in realtime without the worry of sign stealing. Founded in 2014, GoRout is headquartered in Rochester, Minnesota, and is used across all levels of sports, ranging from youth leagues to NCAA Power 5 teams and NFL teams.

For more information, visit gorout.com/