



TELEMATTICA'S GLOBAL RAILWAY MONITORING POWERED BY KORE CONNECTIVITY



THE CHALLENGE

Telemattica Corporation Pty Ltd, a condition monitoring equipment OEM and service provider for the railway sector, operates globally across Europe, North America, South America, Asia, and Australasia. Their innovative approach involves fitting autonomous sensor platforms onto existing railway vehicles to monitor critical infrastructure such as overhead wiring, track and ballast systems, and other corridor assets.

However, a major challenge emerged: railway infrastructure is vast, geographically dispersed, and often located in areas that are unsafe or impossible to access during train operations. Gathering up-to-date condition data on these assets was both difficult and essential—critical for preventive maintenance and failure reduction.

Telemattica developed a solution to piggyback on trains that regularly pass these assets, using them as mobile data collection platforms. But this introduced a new hurdle: ensuring reliable, consistent connectivity for a fleet of mobile sensors installed on trains they didn't own, operating across different countries and cellular networks.

THE SOLUTION

To address this challenge, Telemattica partnered with KORE specifically adopting OmniSIM Rush alongside existing Programmable Wireless SIMs for global deployments.

OmniSIM Rush proved to be a strong fit, delivering:

- A single SIM solution that worked across all of Telemattica's operating regions.
- High data throughput options suitable for their bandwidth needs (~1-10 GB/month).
- Competitive pricing structures that aligned with their data-heavy applications.
- Access to geographically dispersed internet breakout points, which offered improved latency and performance.

This unified connectivity strategy allowed Telemattica to standardize their global deployment model—eliminating the need to stock region-specific equipment and streamlining logistics.



THE RESULTS

"KORE has been very receptive to technical and commercial requests and have been responsive when working through the details. We would recommend them as a connectivity partner."

- Thomas George, Co-Founder and CTO,
Telemattica Corporation Pty. Ltd.

By leveraging KORE's OmniSIM Rush solution, Telemattica achieved:



Simplified global deployments:

They can now manufacture and test equipment centrally and ship it anywhere in the world without needing to configure region-specific connectivity.

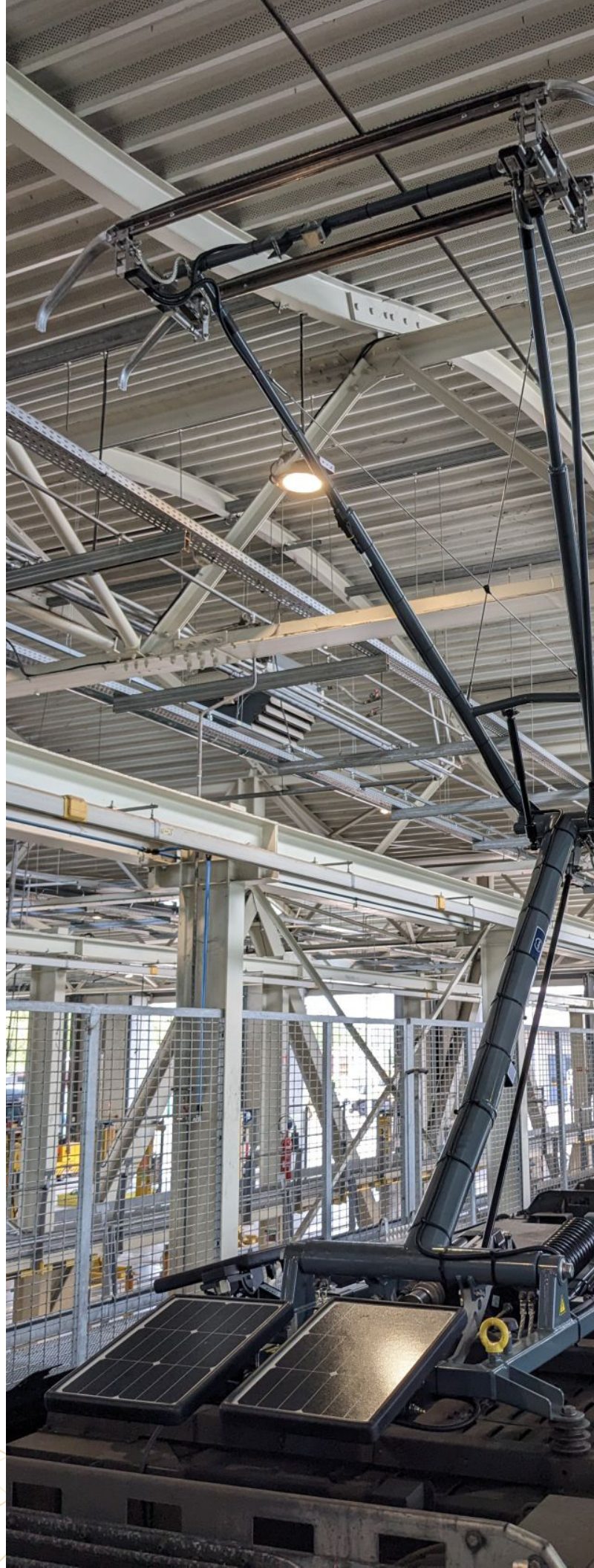


Improved scalability: A single, consistent SIM solution means fewer supply chain headaches and faster rollout of new units.



Reduced operational complexity:

A universal connectivity model simplifies maintenance, updates, and support across markets.





ABOUT KORE

KORE is a pioneer, leader, and trusted advisor delivering mission critical IoT solutions and services. We empower organisations of all sizes to improve operational and business results by simplifying the complexity of IoT. Our deep IoT knowledge and experience, global reach, purpose-built solutions, and deployment agility accelerate and materially impact our customers' business outcomes.

For more information, visit korewireless.com



ABOUT TELEMATTICA CORPORATION PTY LTD

Telemattica are the market leaders in overhead wiring condition monitoring because we work with our clients to help them visualise their networks, enabling them to optimise their resources and extract the most value from their assets.

Telemattica acquires and processes network data for our clients, providing precise, targeted, and actionable outcomes. We work with our clients, removing the complexity of condition monitoring to allow for safe, efficient, and improved operations.

For more information, visit telemattica.com